

说 明 PREFACE

2V78F-2 通用汽油机是重庆力帆内燃机有限公司采用国内外先进技术自行研制开发的双缸、四冲程、强制风冷汽油机。该机具有设计先进、结构紧凑、性能可靠、维修方便、使用经济、调速方便等特点，其配套用途广泛，是发电、旅游、野外作业、娱乐场所、建筑机械、农业机械、林业机械等领域的理想配套动力。

《2V78F-2 通用汽油机零部件图册》是我公司为了方便用户精心编制而成，该图册涵盖了零部件的基本情况，如：简图、名称、数量等，用户订购零件时请参考本册，若与实机不同之处，以实机为准。

《2V78F-2 通用汽油机零部件图册》的所有版权属于力帆通用汽油机有限公司，任何团体和个人不得非法翻印或复制。如有更改，恕不另行通知。

Combine with all the specialty and advantages of the same models at home and abroad, 2V78F-2, being of 4-stroke, double cylinder with force air-cooled type, is one of the newly gasoline engines developed by our Co. It is characterized by advanced design, compact structure, reliable performance, convenient service, low fuel consumption and easy regulation. The engine is widely used as ideal power in many fields such as generating set, tour, open working, public place of entertainment, construction machine, agricultural machinery, etc.

For the sake of customer's convenience, we carefully compile the **PART CATALOGUE FOR 2V78F-2 ENGINE**, which covers the main information of parts, such as illustrations, names, quantities, etc. Please refer to this book when you order the parts. If any difference in the book from the actual engine status, please do as per the real.

The copyright of this catalogue belongs to Lifan General Gasoline Engine Co., Ltd. Any group or individual is forbidden to reprint or copy any item from it. The catalogue is subject to change without notice.

重庆力帆内燃机有限公司

Chongqing Lifan Chongchai Engines Co., Ltd.

二零零六年六月第一版(Jun, 2006 First Edition)

编制		校对		标 准 化		英文校对		批准	
----	--	----	--	----------	--	------	--	----	--

目 录

(INDEX TO ENGINE GROUP)

E-1	曲轴箱总成·····	1
E-2	曲轴箱盖组件·····	3
E-3	气缸头、气缸头盖总成（一）·····	5
E-4	气缸头、气缸头盖总成（二）·····	7
E-5	曲轴、活塞连杆总成·····	9
E-6	凸轮轴装配组合、气门摇臂组合·····	10
E-7	化油器总成·····	12
E-8	空气滤清器总成·····	15
E-9	消声器组件(选配件)·····	16

E-10 调速控制系统..... 17

E-11 飞轮部件..... 18

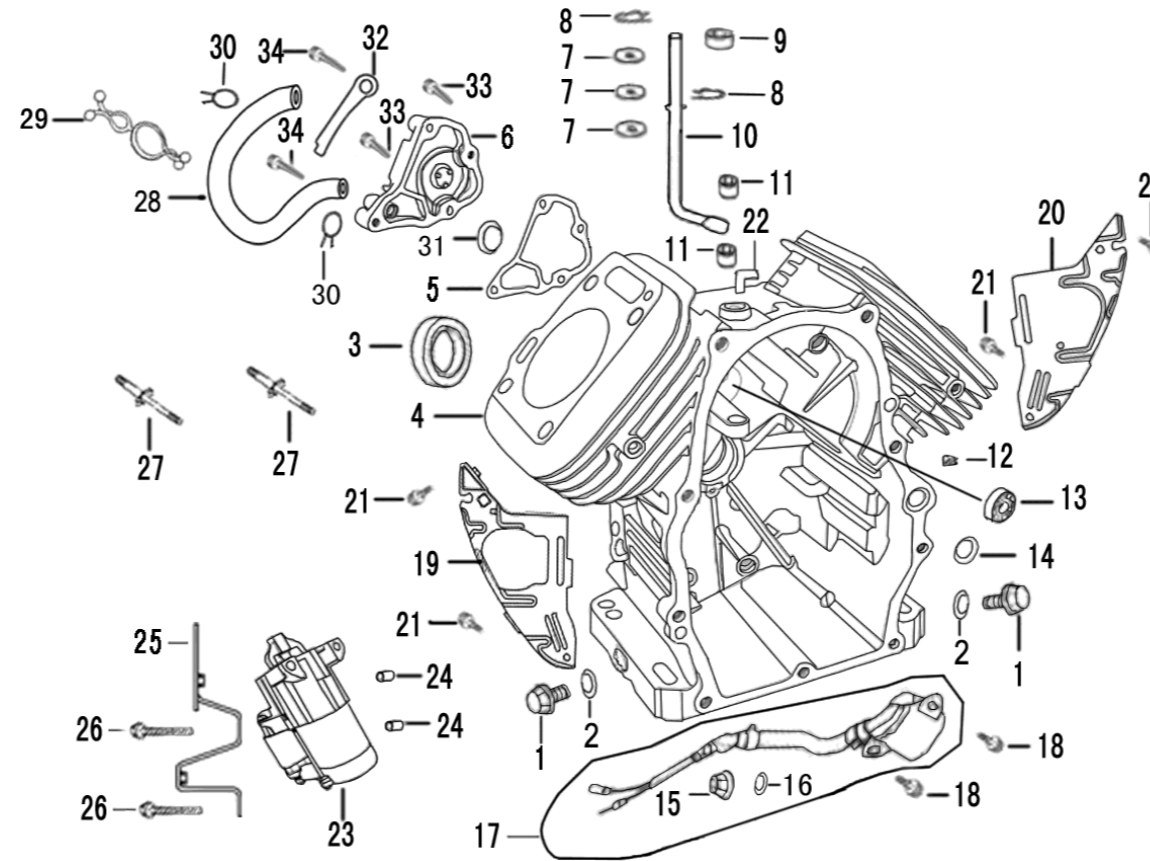
E-12 点火线圈组件..... 19

E-13 启动控制盒总成..... 20

E-14 整流器..... 21

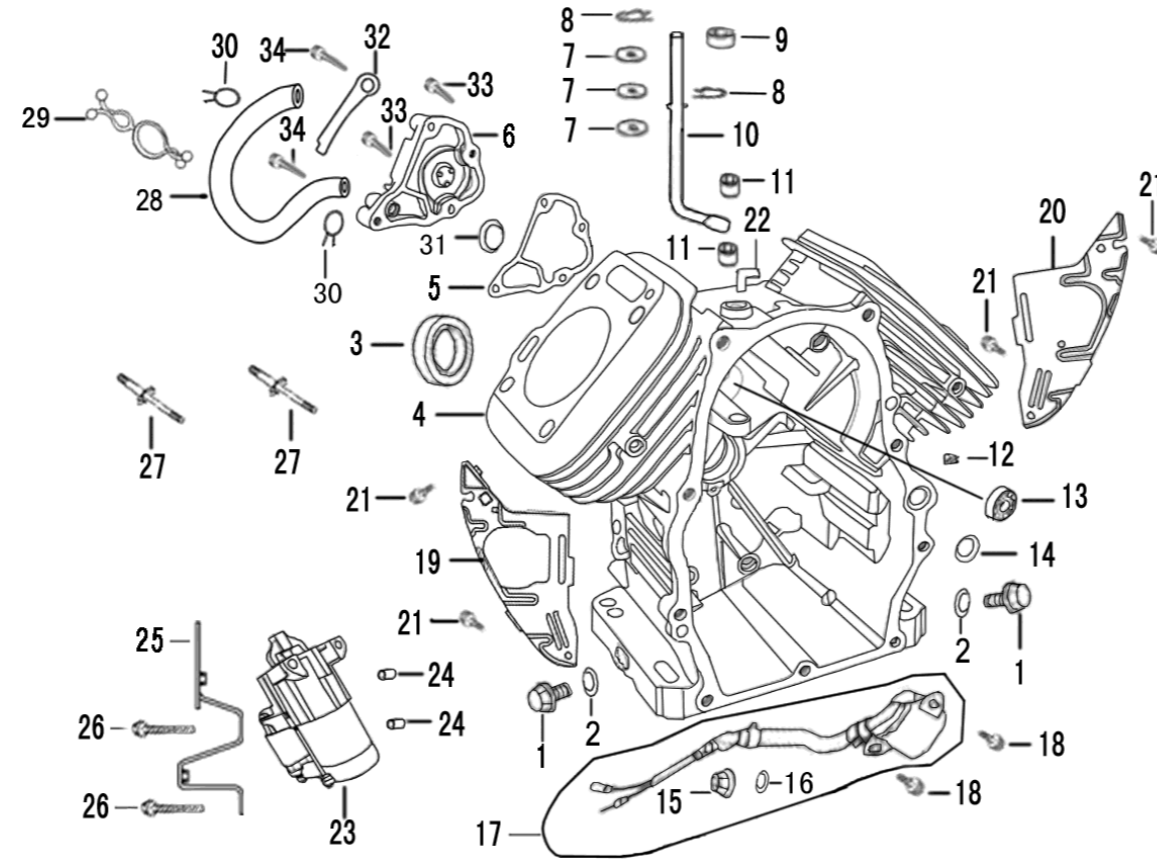
E-15 贴花..... 22

E-1 曲轴箱总成 CRANKCASE ASSY



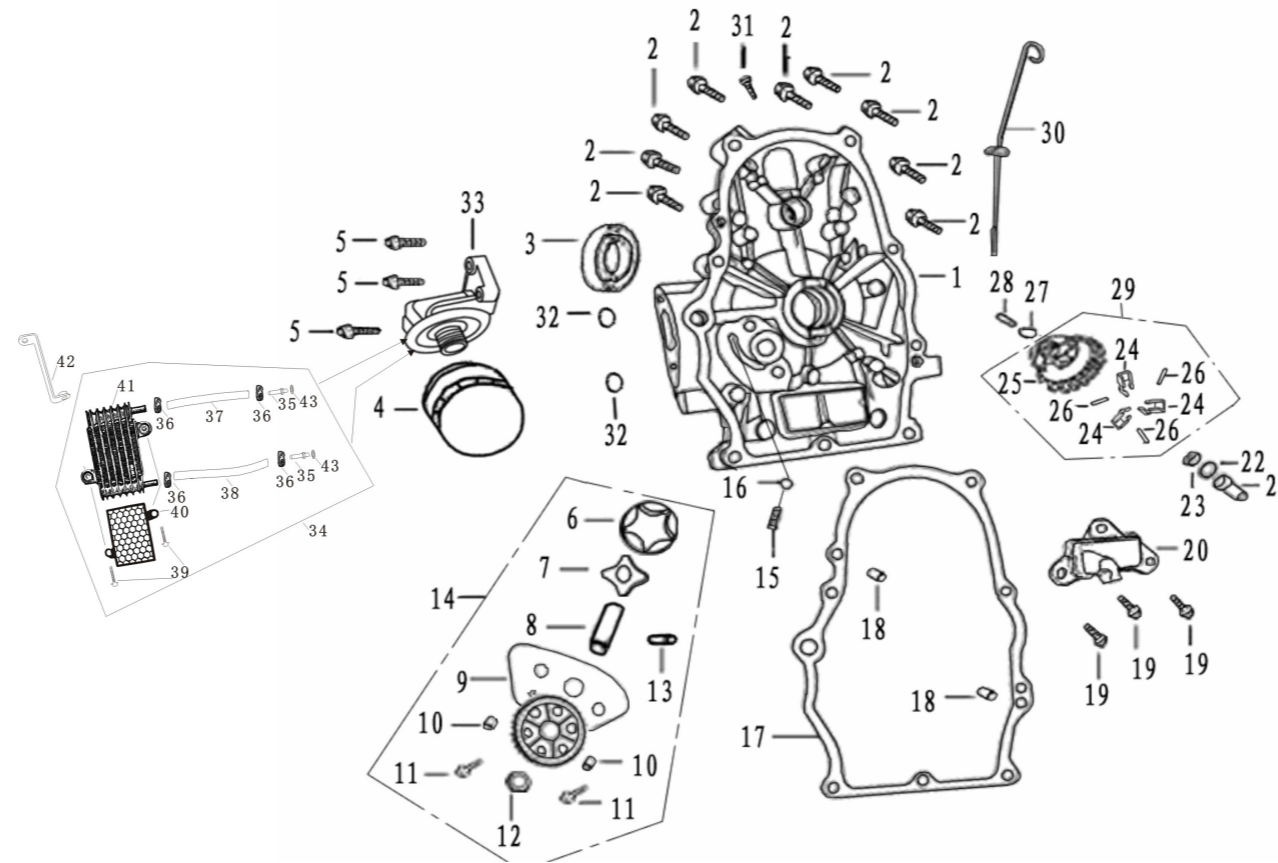
序号 S/N	零部件代号 Part No.	零部件名称	Description	数量 Quantity	备注 Remark
1	11212	放油螺塞	Drain plug	2	
2	11213	放油螺塞垫圈	Wahser, drain plug	2	
3	13180	曲轴油封 38×58×8	Oil seal, crankshaft38×58×8	1	
4	11100	曲轴箱组合	Crankcase	1	
5	12354	迷宫盖板密封垫	Gasket, labyrinth gland	1	
6	12353	迷宫盖板	Gland, labyrinth	1	
7	26329	调速摆杆垫片	Washer	3	
8	26321/168F	调速摆杆锁夹	Split pin	2	
9	26390	调速摆杆油封 8×14×5	Oil seal, regulating sway bar	1	
10	26311	调速摆杆	Regulating sway bar	1	
11	GB/T12764	滚针轴承 φ8×10×12	Roller bearing	2	
12	13142	油道堵塞	Plug, oil passage	1	
13	GB/T279	轴承 6003	Bearing 6003	1	
14	11124	O 型密封圈 φ13×2.5	O-ring	1	
15	GB/T6177.1	螺母 M10	Nut M10	1	
16	GB/T3452.1	O 型密封圈 13×1.4	O-ring	1	
17	37810/173F	机油传感器	Oil sensor	1	

E-1 曲轴箱总成 CRANKCASE ASSY



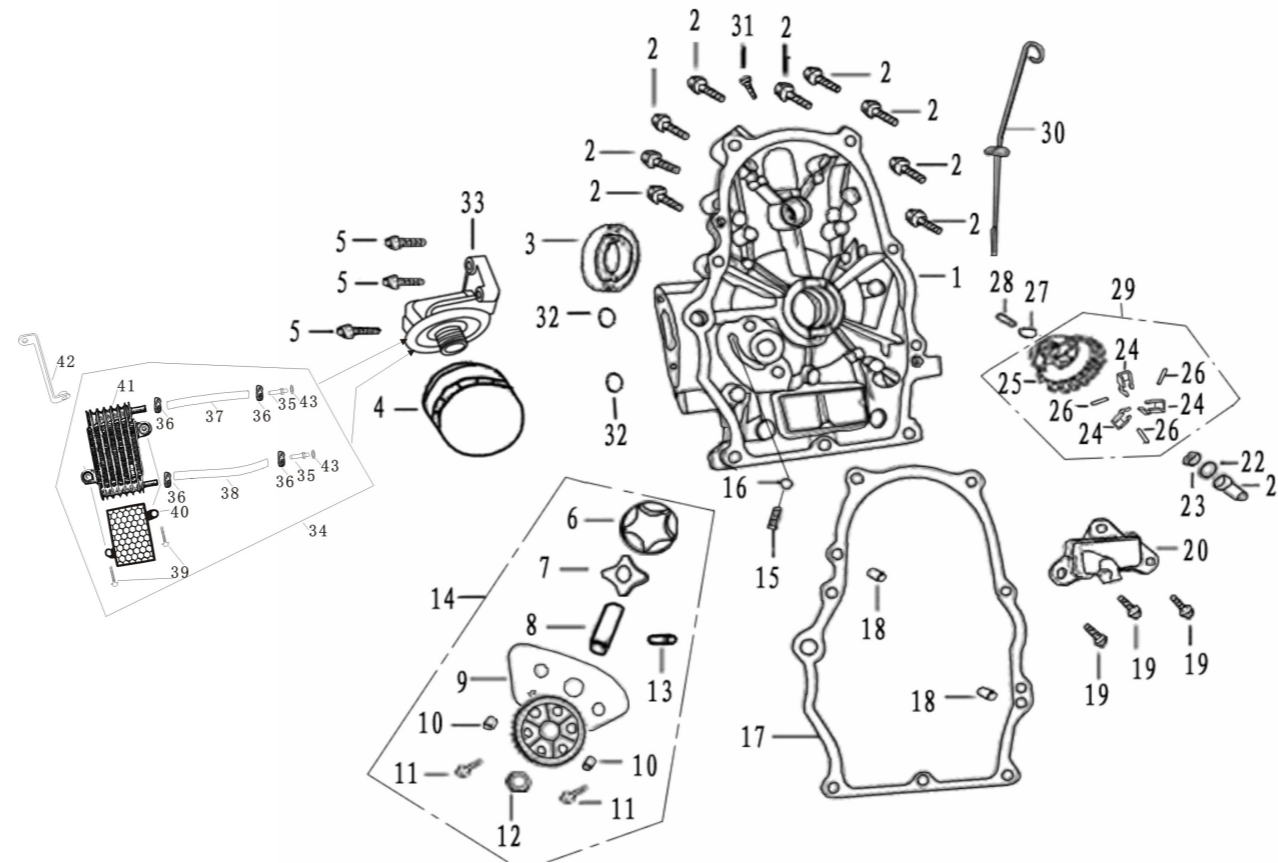
序号 S/N	零部件代号 Part No.	零部件名称	Description	数量 Quantity	备注 Remark
18	GB/T16674.1	螺栓 M6×16	Bolt M6×16	2	
19	19821	曲轴箱侧板 I	Slide plate, crankcaseI	1	
20	19825	曲轴箱侧板 II	Slide plate, crankcaseII	1	
21	GB/T16674.1	螺栓 M6×12	Bolt M6×12	4	
22	20150	废气嘴组合	Nipple, exhaust	1	
23	34700	起动电机总成	Motor, starting	1	
24	34713	起动电机定位销 φ10×12	Dowel pin, Motor, starting	2	
25	34750	起动电机连接架组合	Connecting member set, starting motor	1	
26	28652	起动电机螺栓 M8×110	Bolt M8×110	2	
27	34911	点火线圈双头螺栓	Stud, ignition coil	2	
28	20152	废气管	Pipe, exhaust	1	
29	20130	废气管管夹组合	Clamp set, exhaust pipe	1	
30	20154	废气管管夹	Clamp, exhaust pipe	2	
31	15453	阀片	Valve piece	1	
32	32213	压线板	Clamper, cord	1	
33	GB/T16674.1	螺栓 M6×16	Bolt M6×16	2	
34	GB/T16674.1	螺栓 M6×30	Bolt M6×30	2	

E-2 曲轴箱盖组件 CRANKCASE COVER ASSY



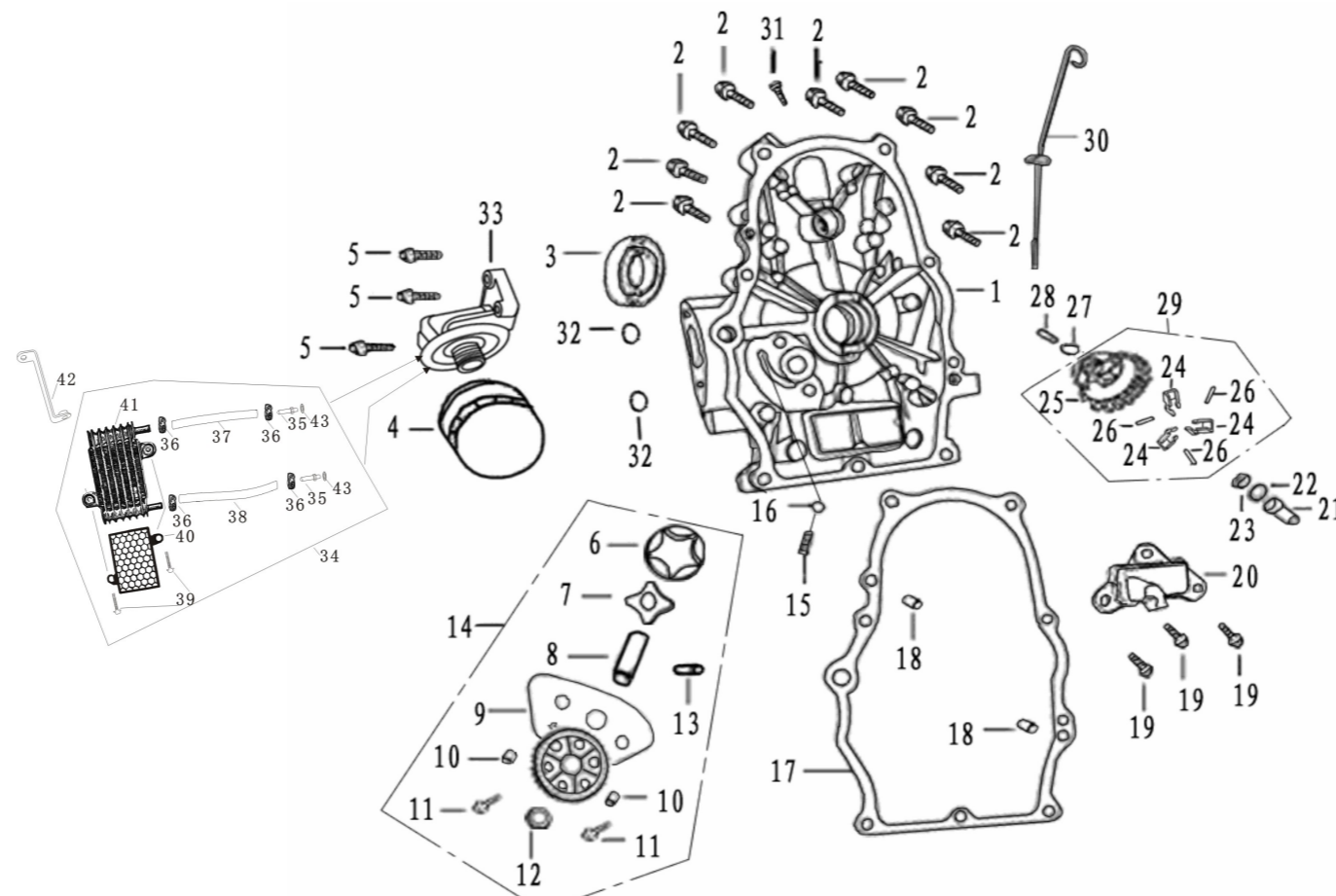
序号 S/N	零部件代号 Part No.	零部件名称	Description	数量 Quantity	备注 Remark
1	11311	曲轴箱盖	Crankcase cover	1	
2	12256/1P64FV	螺栓 M8×50	Bolt M8×50	9	
3	13180	曲轴油封 38×58×8	Oil seal, crankshaft	1	
4	15410	机油滤清器总成	Oil filter Assy	1	
5	GB/T16674.1	螺栓 M6×25	Bolt M6×25	3	
6	15115	机油泵外转子	Rotor, outer, oil pump	1	
7	15114	机油泵内转子	Rotor, inner, oil pump	1	
8	15116	机油泵轴	Shaft, oil pump	1	
9	15112	机油泵盖	Cover, oil pump	1	
10	15118	机油泵定位销	Set pin, oil pump	2	
11	GB/T70.1	螺钉 M6×16	Screw M6×16	2	
12	15126	从动齿轮嵌件	Insertor, driven gear	1	
13	15029	机油泵轴内转子传动销	drive pin	1	
14	15100	机油泵总成	Oil pump Assy	1	
15	15168	弹簧	Spring	1	
16	GB/T308	(泻油) 钢球 S φ9.5	Ball S φ9.5	1	
17	11119	曲轴箱垫片	Gasket, crankcase	1	

E-2 曲轴箱盖组件 CRANKCASE COVER ASSY



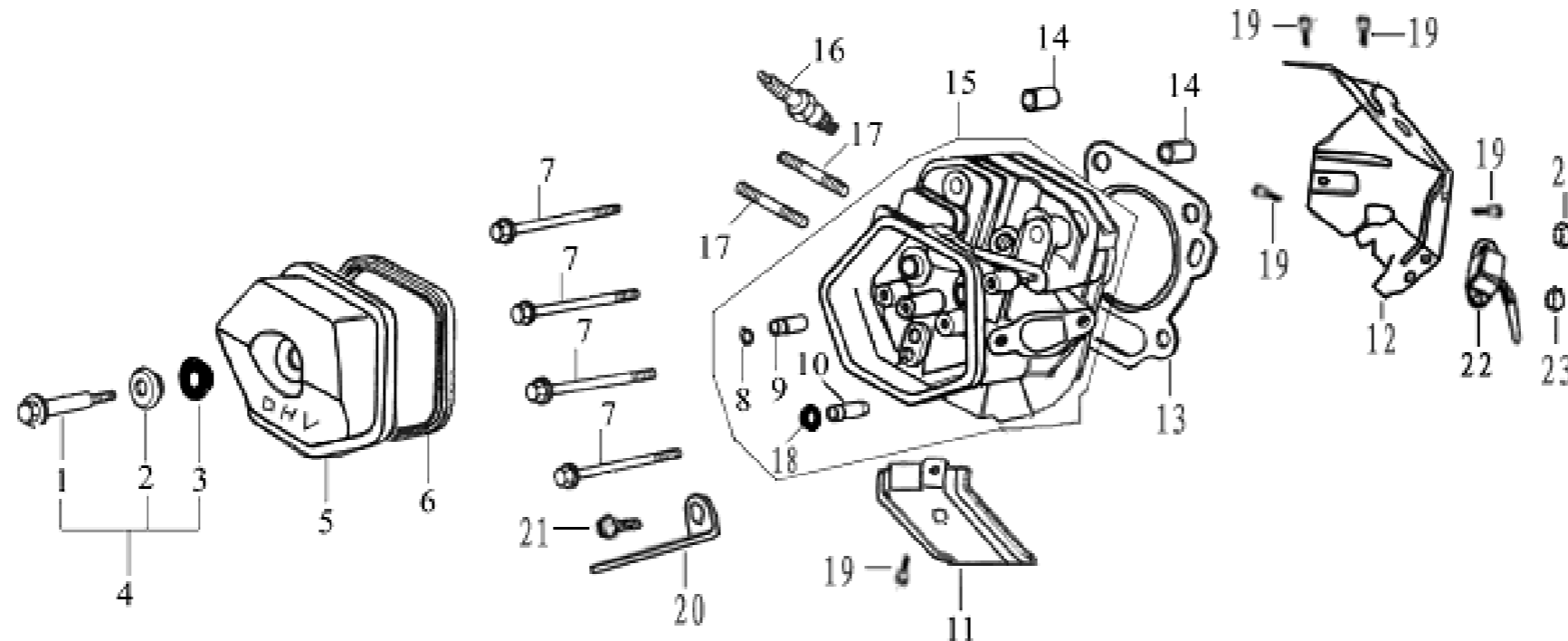
序号 S/N	零部件代号 Part No.	零部件名称	Description	数量 Quantity	备注 Remark
18	11118	定位销	Set pin	2	
19	GB/T5789	螺栓 M6×16	Bolt M6×16	3	
20	15450	机油滤网组合	Gauze set	1	
21	25131	调速滑套	Sliding sleeve	1	
22	25132/168F	调速滑套垫片	Washer	1	
23	25164/173F	调速轴卡圈	Snap ring	1	
24	25141	调速飞块	Flying block	3	
25	25121	调速从动齿轮	Driven gear, regulator	1	
26	25163	飞块销	Pin	3	
27	25165/173F	调速从动齿轮垫片	Washer, driven gear	1	
28	25151	调速轴	Regulating shaft	1	
29	25120	调速从动齿轮组件	Driven gear, regulator assy	1	
30	15610	机油尺组件	Dipstick with seal	1	
31	11113	油孔螺塞	Plug	1	
32	15442	O型密封圈 φ13×2	O-ring φ13×2	2	
33	15412	机油滤清器座		1	

E-2 曲轴箱盖组件 CRANKCASE COVER ASSY



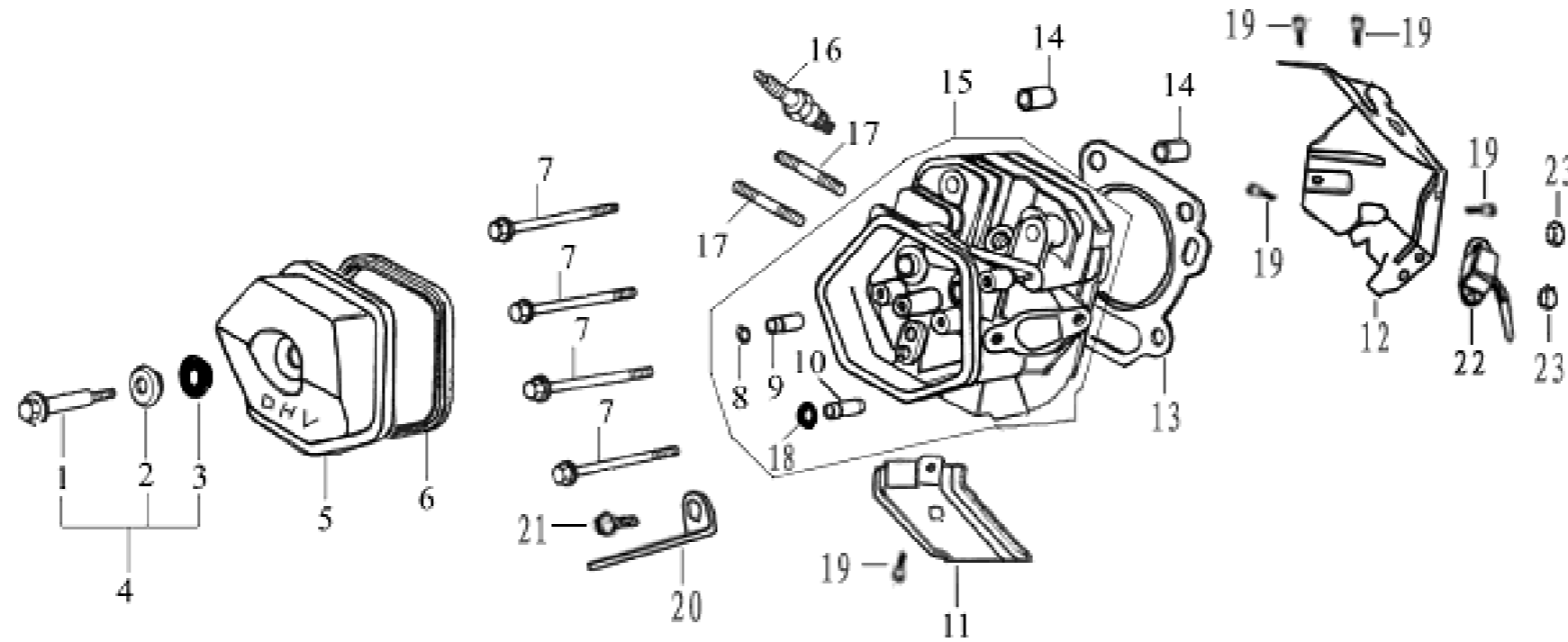
序号 Ref. No.	零部件代号 Part No.	零部件名称	Description	数量 Quantity	备注 Remark
34	19630	冷凝器组件	Condenser assembly	1	
35	19636	连接管	Connecting pipe	2	
36	19637	管夹	Clamp	4	
37	19632	短油管	Short pipe	1	
38	19631	长油管	Long pipeline	1	
39	GB/T16674	螺栓 M6X32	Bolt m6×32	2	
40	19633	冷凝器保护罩	Condenser protective cover	1	
41	19634	冷凝器	Condenser	1	
42	19620	冷凝器安装支架	Mounting bracket	1	
43	19635	密封垫	seal	2	

E-3 气缸头 气缸头盖总成 I CYLINDER HEAD & CYLINDER HEAD COVER ASSY I



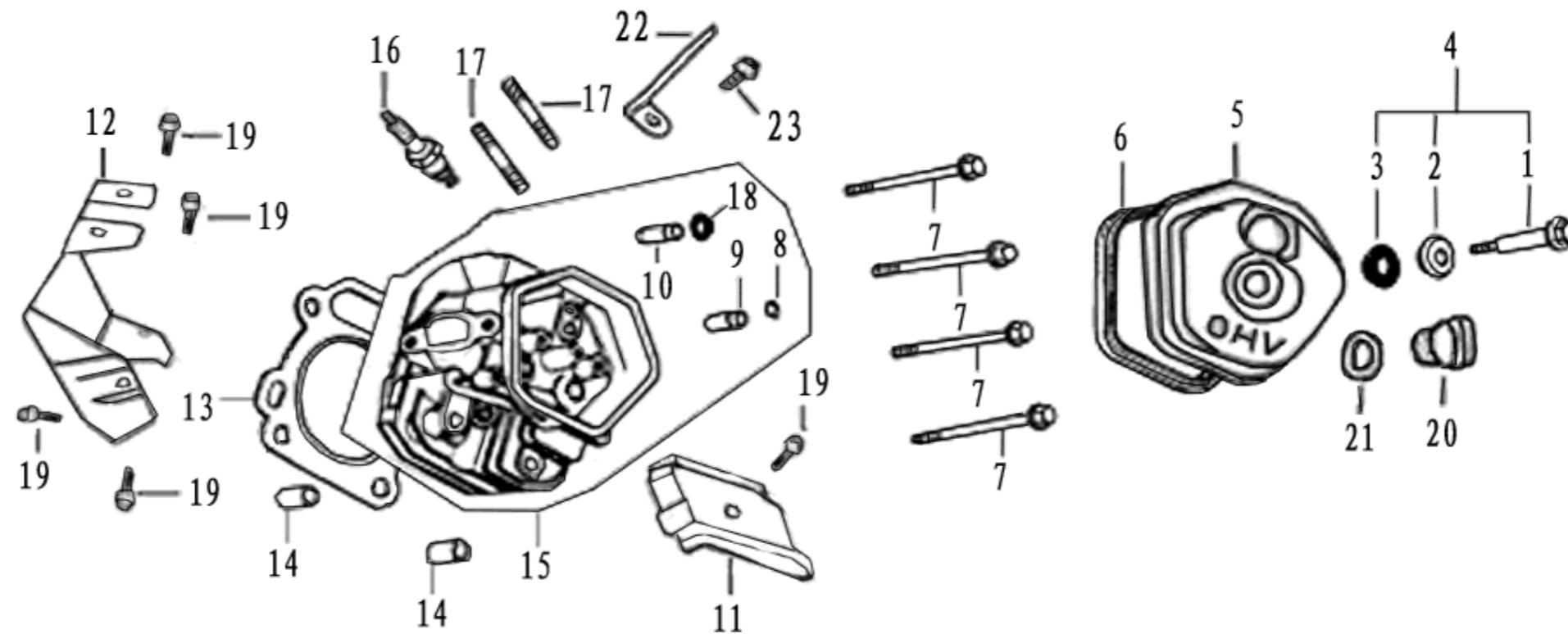
序号 S/N	零部件代号 Part No.	零部件名称	Description	数量 Quantity	备注 Remark
1	12411/173F	气缸头盖螺栓	Bolt	1	
2	12412/173F	气缸头盖螺栓垫圈	Washer	1	
3	12421/173F	橡胶圈	Rubber seal	1	
4	12410/173F	气缸头盖螺栓组件	Bolt	1	
5	12310	气缸头盖 I	Cylinder head cover AssyI	1	
6	12312/173F	气缸头盖密封圈	Gasket, cylinder head cover	1	
7	12256/173F	气缸头螺栓	Bolt	4	
8	12219/173F	排气门导管卡圈	Circip	1	
9	12215/173F	排气门导管	Exhaust valve guide	1	
10	12214/173F	进气门导管	Intake valve guide	1	
11	19711	导风罩	Deflector	1	
12	19721	下导风罩 I	Lead wind coverI	1	
13	12220	气缸头密封垫	Gasket, cylinder head	1	
14	12218	气缸头定位销 $\phi 12 \times 16$	Set pin	2	
15	12210	气缸头组合 I	Cylinder head AssyI	1	
16	34200/173F	火花塞 F6TC	Spark plug F6TC	1	
17	12253	排气口双头螺栓	Stud	2	

E-3 气缸头 气缸头盖总成 I CYLINDER HEAD & CYLINDER HEAD COVER ASSY I



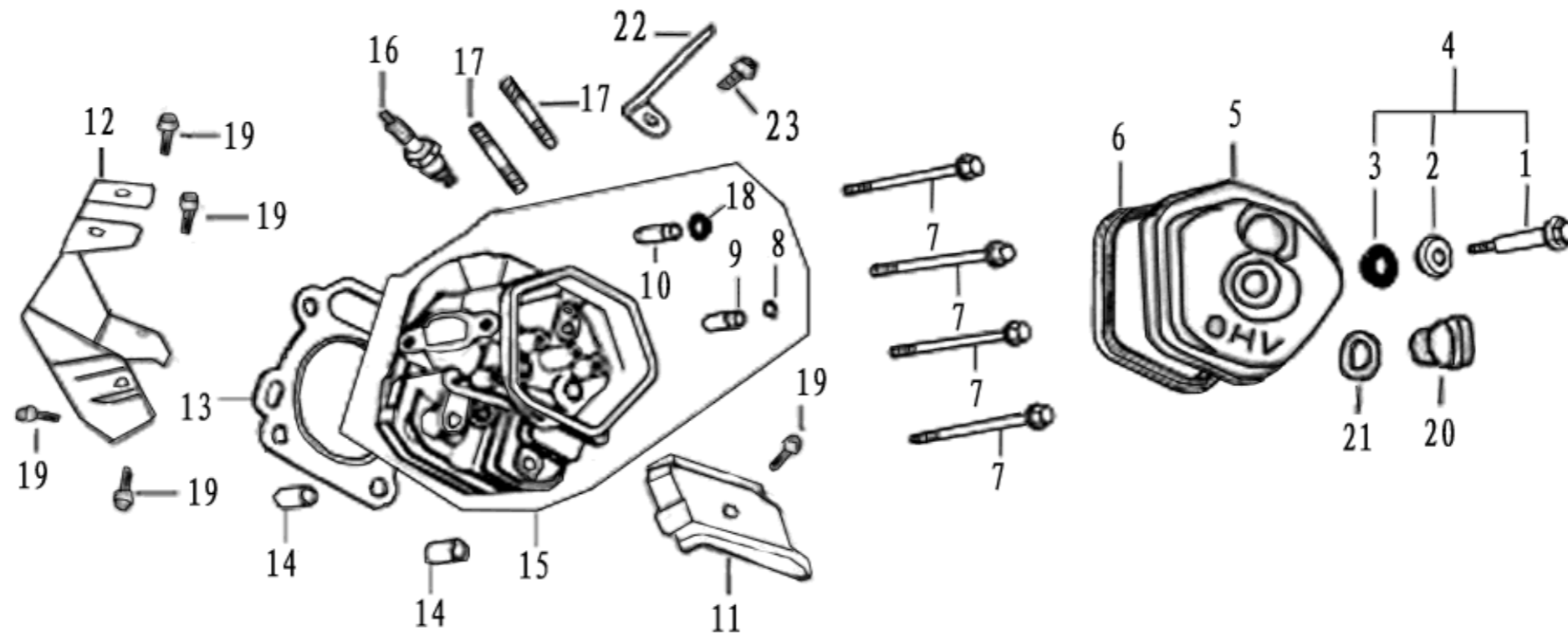
序号 S/N	零部件代号 Part No.	零部件名称	Description	数量 Quantity	备注 Remark
18	14730/173F	挡油罩	Seal	1	
19	GB/T16674.1	螺栓 M6×12	Bolt M6×12	6	
20	41113	吊环支架	Ring support	1	
21	GB/T16674.1	螺栓 M8×16	Bolt M8×16	1	
22	37850	单向导通器	Diode	1	
23	GB/T6177.1	螺母 M6	Nut M6	2	

E-4 气缸头 气缸头盖总成 II CYLINDER HEAD & CYLINDER HEAD COVER ASSY II



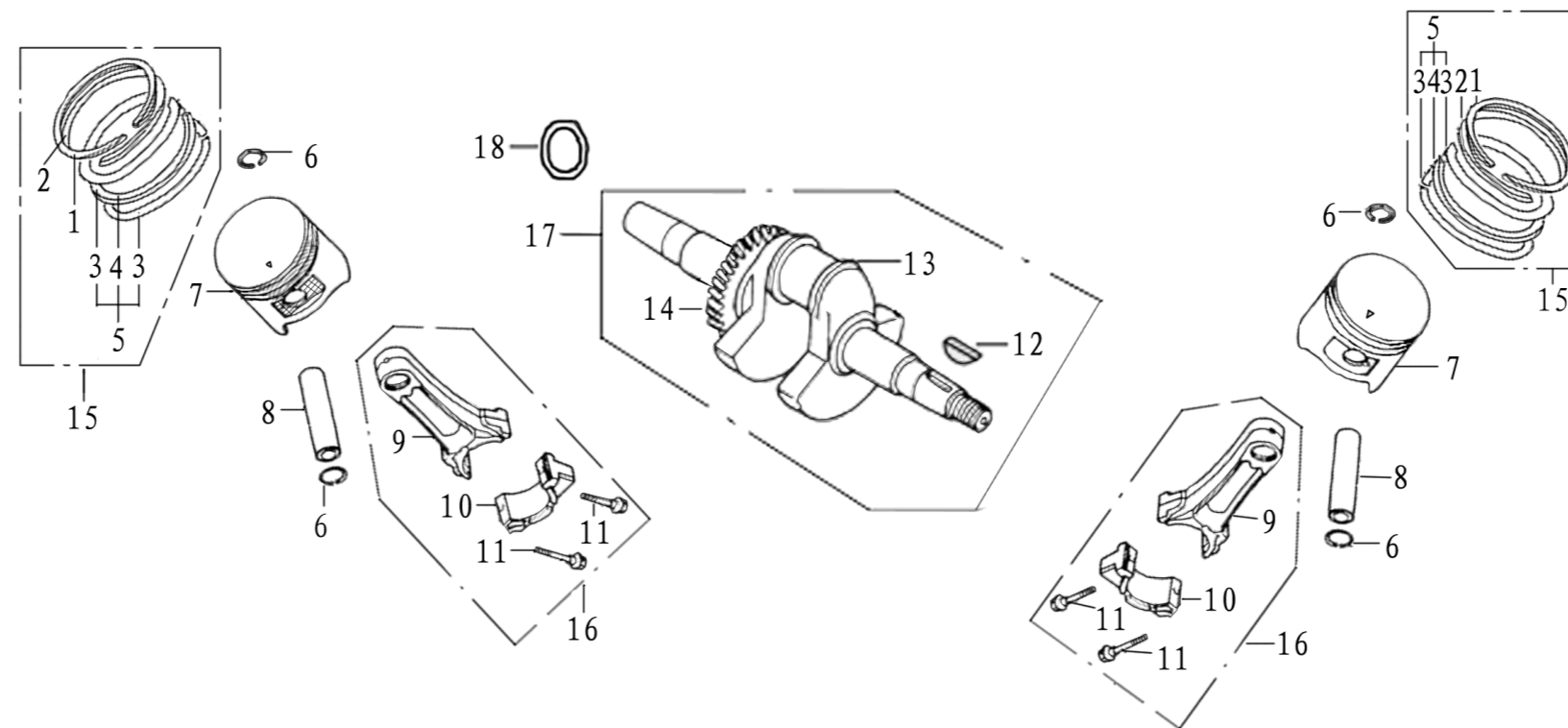
序号 S/N	零部件代号 Part No.	零部件名称	Description	数量 Quantity	备注 Remark
1	12411/173F	气缸头盖螺栓	Bolt	1	
2	12412/173F	气缸头盖螺栓垫圈	Washer	1	
3	12421/173F	橡胶圈	Rubber seal	1	
4	12410/173F	气缸头盖螺栓组件	Bolt	1	
5	12336	气缸头盖 II	Cylinder head cover AssyII	1	
6	12312/173F	气缸头盖密封圈	Gasket, cylinder head cover	1	
7	12256/173F	气缸头螺栓	Bolt	4	
8	12219/173F	排气门导管卡圈	Circip	1	
9	12215/173F	排气门导管	Exhaust valve guide	1	
10	12214/173F	进气门导管	Intake valve guide	1	
11	19711	导风罩	Deflector	1	
12	19723	下导风罩 II	Lead wind coverII	1	
13	12220	气缸头密封垫	Gasket, cylinder head	1	
14	12218	气缸头定位销 $\phi 12 \times 16$	Set pin	2	
15	12230	气缸头组合 II	Cylinder head AssyII	1	
16	34200/173F	火花塞 F6TC	Spark plug F6TC	1	
17	12253	排气口双头螺栓	Stud	2	

E-4 气缸头 气缸头盖总成 II CYLINDER HEAD & CYLINDER HEAD COVER ASSY II



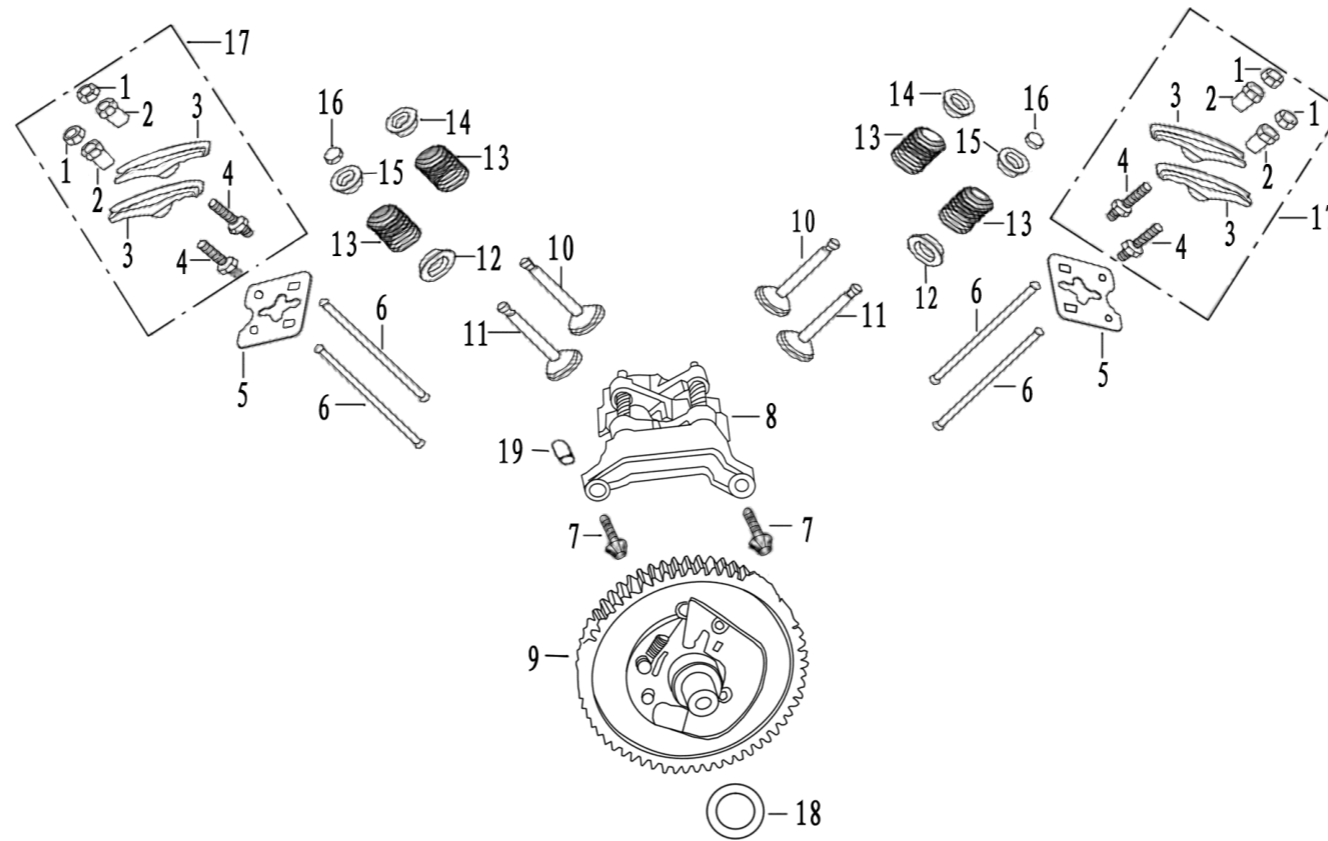
序号 S/N	零部件代号 Part No.	零部件名称	Description	数量 Quantity	备注 Remark
18	14730/173F	挡油罩	Seal	1	
19	GB/T16674.1	螺栓 M6×12	Bolt M6×12	5	
20	15651	机油塞	Oil plug	1	
21	15652	机油塞密封圈	Seal	1	
22	41113	吊环支架	Ring support	1	
23	GB/T16674.1	螺栓 M8×16	Bolt M8×16	1	

E-5 曲轴 活塞连杆总成 CRANKSHAFT, PISTON, CONNECTING



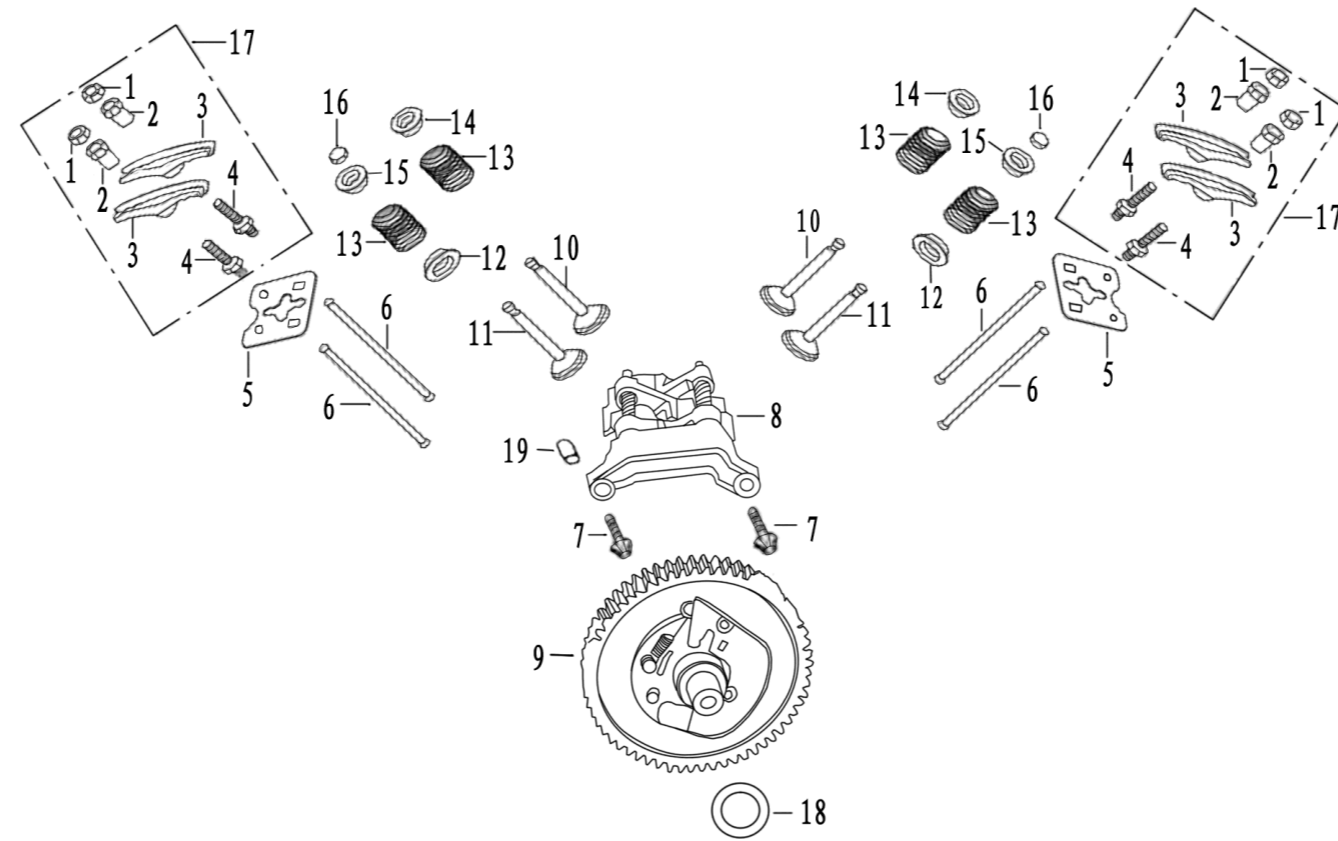
序号 S/N	零部件代号 Part No.	零部件名称	Description	数量 Quantity	备注 Remark
1	13311	活塞环 I	Piston ring I	2	
2	13312	活塞环 II	Piston ring II	2	
3	13322	侧环	Side rail	4	
4	13321	衬簧	Expander	2	
5	13320	油环组合	Scraper ring set	2	
6	13222/173F	活塞销挡圈	Piston pin circlip	4	
7	13211	活塞	Piston	2	
8	13221	活塞销	Piston pin	2	
9	13131	连杆	Connecting rod	2	
10	13132	连杆盖	Connecting rod cover	2	
11	13133/173F	连杆螺栓	Bolt	4	
12	13118/173F	半圆键	Wood ruff key	1	
13	13111	曲轴	Crankshaft	1	
14	14211	正时主动齿轮	Timing driving gear	1	
15	13300	活塞环组合	Piston ring set	2	
16	13130	连杆组合	Connecting rod assy	2	
17	13110	曲轴组合	Crankshaft assy	1	
18	13119	曲轴调整垫片	Adjusting washer	1	

E-6 凸轮轴装配组合 气门摇臂组合 COMBINATION OF CAM SHAFT & VALVE ROCKER



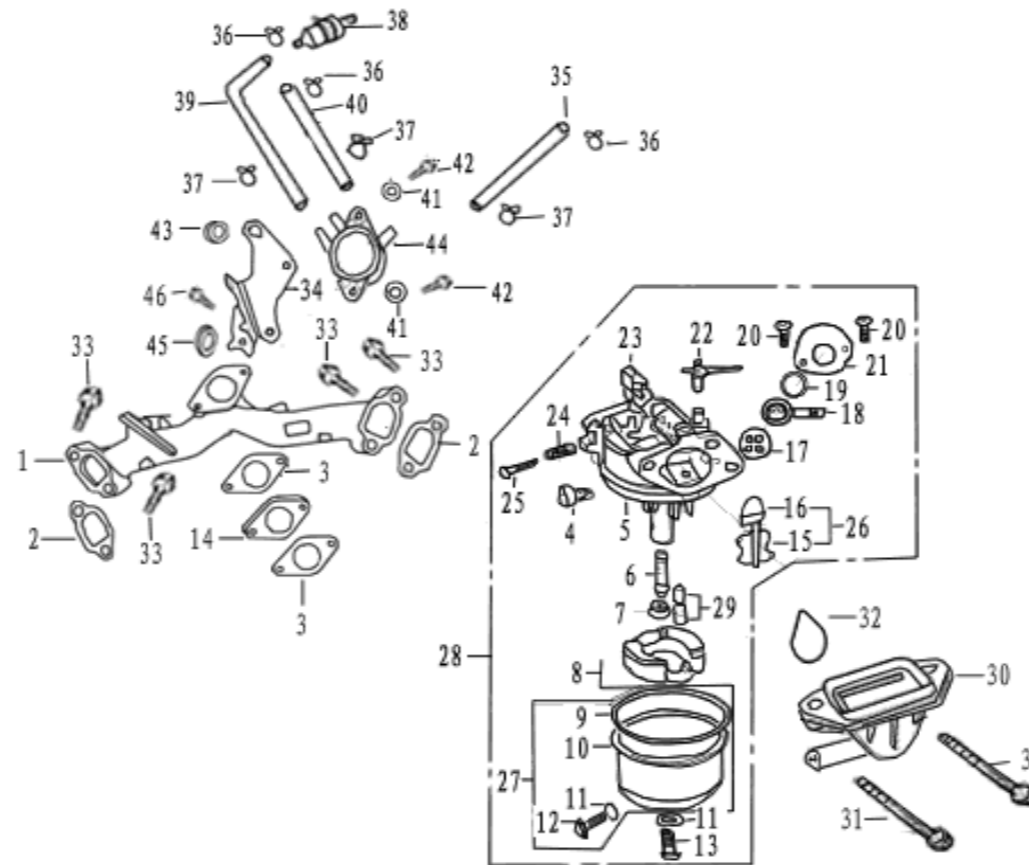
序号 S/N	零部件代号 Part No.	零部件名称	Description	数量 Quantity	备注 Remark
1	14416/173F	气门间隙调节螺母	Lock nut	4	
2	14413/173F	摇臂轴座销	Sleeve	4	
3	14411/173F	气门摇臂	Valve rocker	4	
4	14415/173F	气门间隙调节螺栓	Adjusting bolt for valve gap	4	
5	14261/173F	推杆导架	Pusher guide	2	
6	14250	推杆组合	Pusher	4	
7	GB/T16674.1	螺栓 M6×20	Bolt M6×20	2	
8	14450	下摇臂装配组合	Rocker arm Assy, lower	1	
9	14100	凸轮轴装配组合	Camshaft assy	1	
10	14711/182F	进气门	Intake valve	2	
11	14721/182F	排气门	Exhaust valve	2	
12	14753/173F	排气门弹簧下座	Spring retainer, exhaust valve	2	
13	14755/173F	气门弹簧	Valve spring	4	
14	14757/173F	排气门弹簧座	Spring seat, exhaust valve	2	
15	14751 /173F	进气门弹簧座	Spring seat, intake valve	2	
16	14758 /173F	排气门顶帽	Cap	2	
17	14410 /173F	气门摇臂装配组合	Valve rocker assy	2	

E-6 凸轮轴装配组合 气门摇臂组合 COMBINATION OF CAM SHAFT & VALVE ROCKER



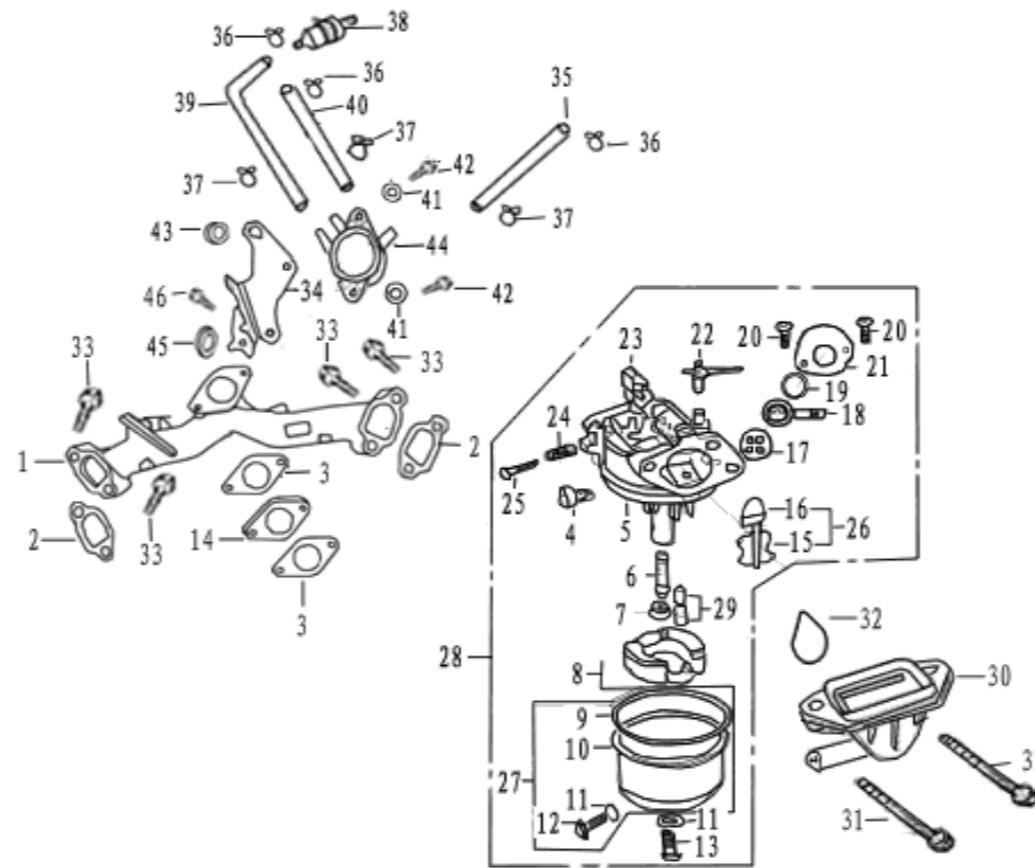
序号 S/N	零部件代号 Part No.	零部件名称	Description	数量 Quantity	备注 Remark
18	14117	凸轮轴调整垫片	Adjusting washer	1	
19	11118/173F	定位销 $\phi 8 \times 12$	Set pin $\phi 8 \times 12$	1	

E-7 化油器总成 进气管总成 CARBURETOR ASSY & INLET PIPE ASSY



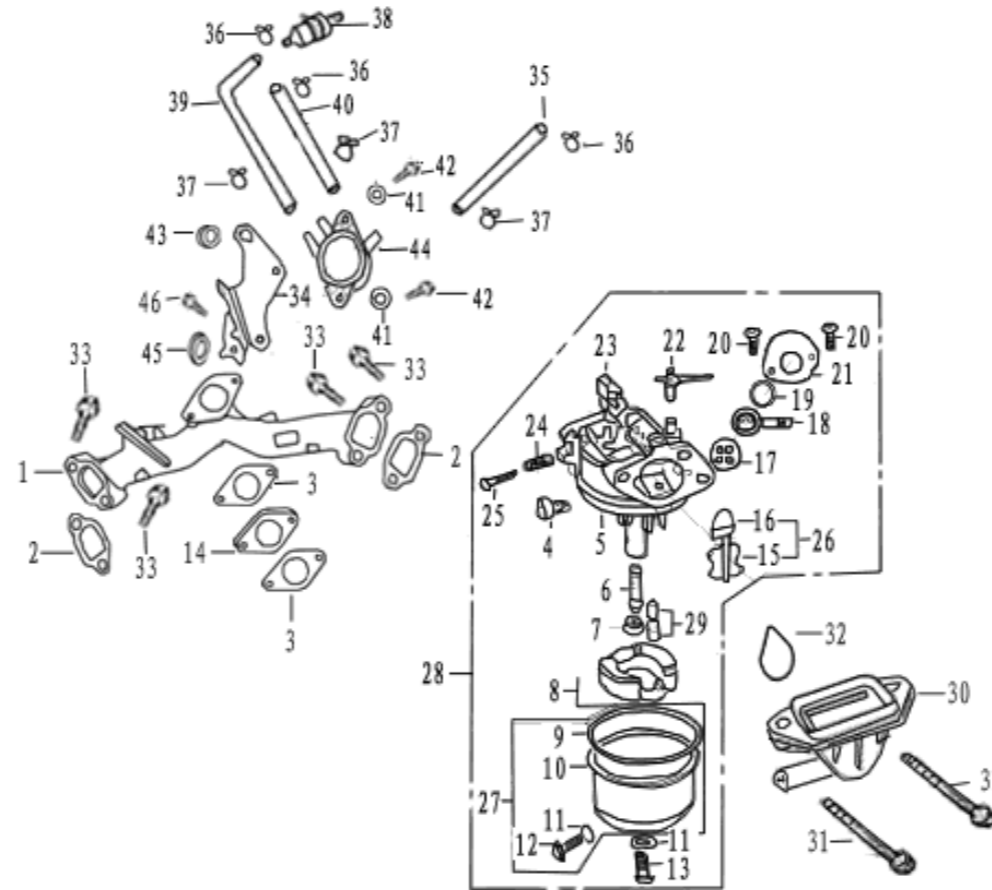
序号 S/N	零部件代号 Part No.	零部件名称	Description	数量 Quantity	备注 Remark
1	17311	进气管	Inlet pipe	1	
2	12254	进气口垫片	Inlet gasket	2	
3	16142	化油器垫片	Carburetor gasket	2	
4	16421	怠速调整螺钉	Idle adjustment screw	1	
5	16250	化油器混合室体	Mixture chamber body	1	
6	16251	主喷油管	Main nozzle	1	
7	16254	主喷油嘴	Main jet	1	
8	16230	浮子组合	Float	1	
9	16219	浮子室密封垫	Float chamber gasket	1	
10	16211	浮子室	Float chamber	1	
11	16216	浮子室放油螺钉垫圈	Washer	2	
12	16215	浮子室放油螺钉	Float chamber drain Screw	1	
13	16213	底部螺钉	Screw	1	
14	16141	化油器接块	Connecting block	1	
15	16331	阻风门	Choke	1	

E-7 化油器总成 进气管总成 CARBURETOR ASSY & INLET PIPE ASSY



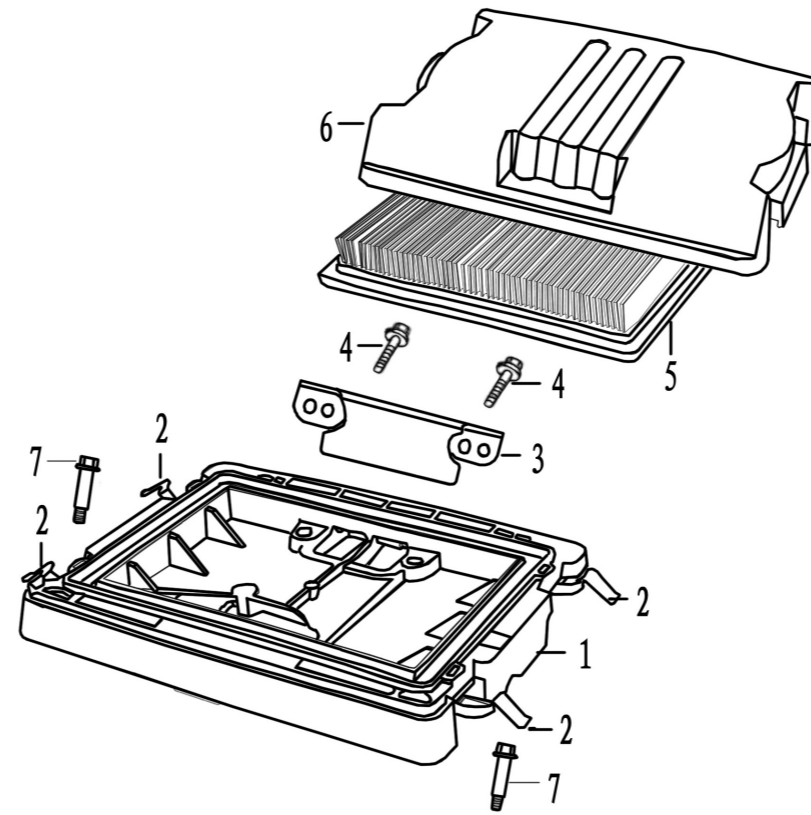
序号 S/N	零部件代号 Part No.	零部件名称	Description	数量 Quantity	备注 Remark
16	16332	阻风门轴	Choke stem	1	
17	16312	油门控制臂密封圈	Airproof washer	1	
18	16311	油门控制臂	Throttle lever	1	
19	16313	油门控制臂钢垫片	Washer	1	
20	GB/T16674.1	螺钉 M4	Screw M4	2	
21	16314	油门控制臂固定盖	Cover	1	
22	16148	阻风门开关	Choke switch	1	
23	16280	节气门组合	Throttle unit	1	
24	16422	混合比调整螺钉弹簧	Spring, mixture adjustment screw	1	
25	16425	混合比调整螺钉	Mixture adjustment screw	1	
26	16330	阻风门组合	Choke unit	1	
27	16210	浮子室组合	Float chamber	1	
28	16100	化油器总成	Carburetor Assy	1	
29	16240	浮子油针组合	Float needle	1	
30	17190	空滤器安装支架组合	Bracket, air cleaner	1	

E-7 化油器总成 进气管总成 CARBURETOR ASSY & INLET PIPE ASSY



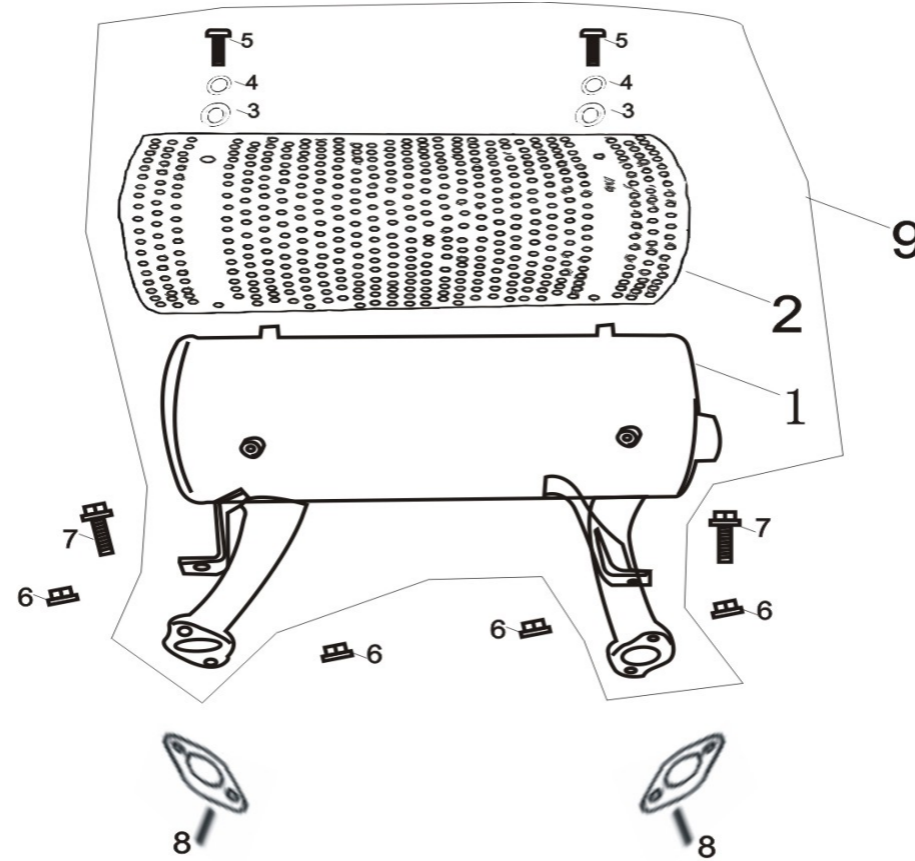
序号 S/N	零部件代号 Part No.	零部件名称	Description	数量 Quantity	备注 Remark
31	16143	化油器螺栓 M6×120	Bolt M6×120	2	
32	17332	进气管密封圈	gasket, inlet pipe	1	
33	GB/T16674.1	螺栓 M8×50	Bolt M8×50	4	
34	16731	汽油泵支撑板		1	
35	16735	汽油泵出油管	Outlet pipe, fuel pump	1	
36	16936	油管夹 I	Clamp, pipeI	3	
37	16937	油管夹 II	Clamp, pipeII	3	
38	16870	燃油过滤器组件		1	
39	16734	汽油泵进油管	Inlet pipe, fuel pump	1	
40	16737	汽油泵负压管	Vacuum pipe, fuel pump	1	
41	16733	汽油泵垫片	Washer, fuel pump	2	
42	GB/T16674.1	螺栓 M6×12	Screw M6×12	2	
43	16732	垫圈 I	WasherI	1	
44	16700	汽油泵总成	Fuel pump Assy	1	
45	16738	垫圈 II	WasherII	1	
46	GB/T16674.1	螺栓 M6×16	Bolt M6×16	1	

E-8 空气滤清器总成 AIR CLEANER ASSY



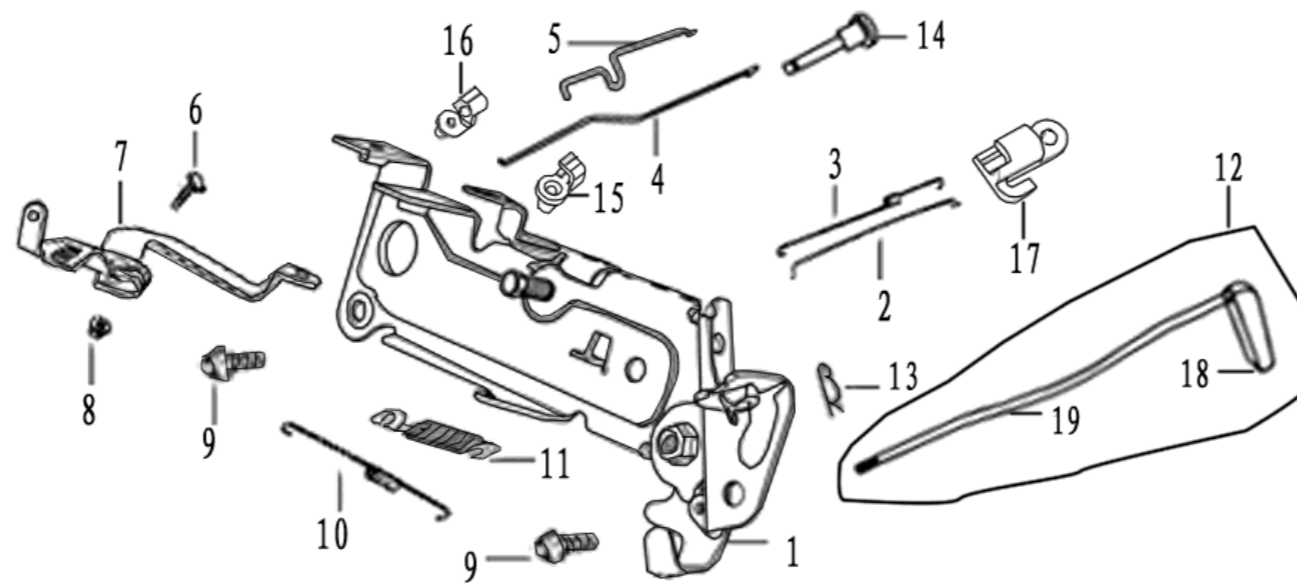
序号 Ref.No.	零部件代号 Part No	零部件名称	Description	数量 Quantity	备注 Remark
1	17131	空滤器座	Air cleaner housing	1	
2	17150	空滤器卡箍	Clamp, air cleaner	4	
3	17134	空滤器通风盖板	Ventilation Cover	1	
4	GB/T16674.1	螺栓 M6×25	Bolt M6×25	2	
5	17130	滤芯组件	Filter element	1	
6	17111	空滤器盖	Air cleaner cover	1	
7	17151	空滤器螺栓	Bolt, air cleaner	2	

E-9 消声器组件 MUFFLER (OPTION)



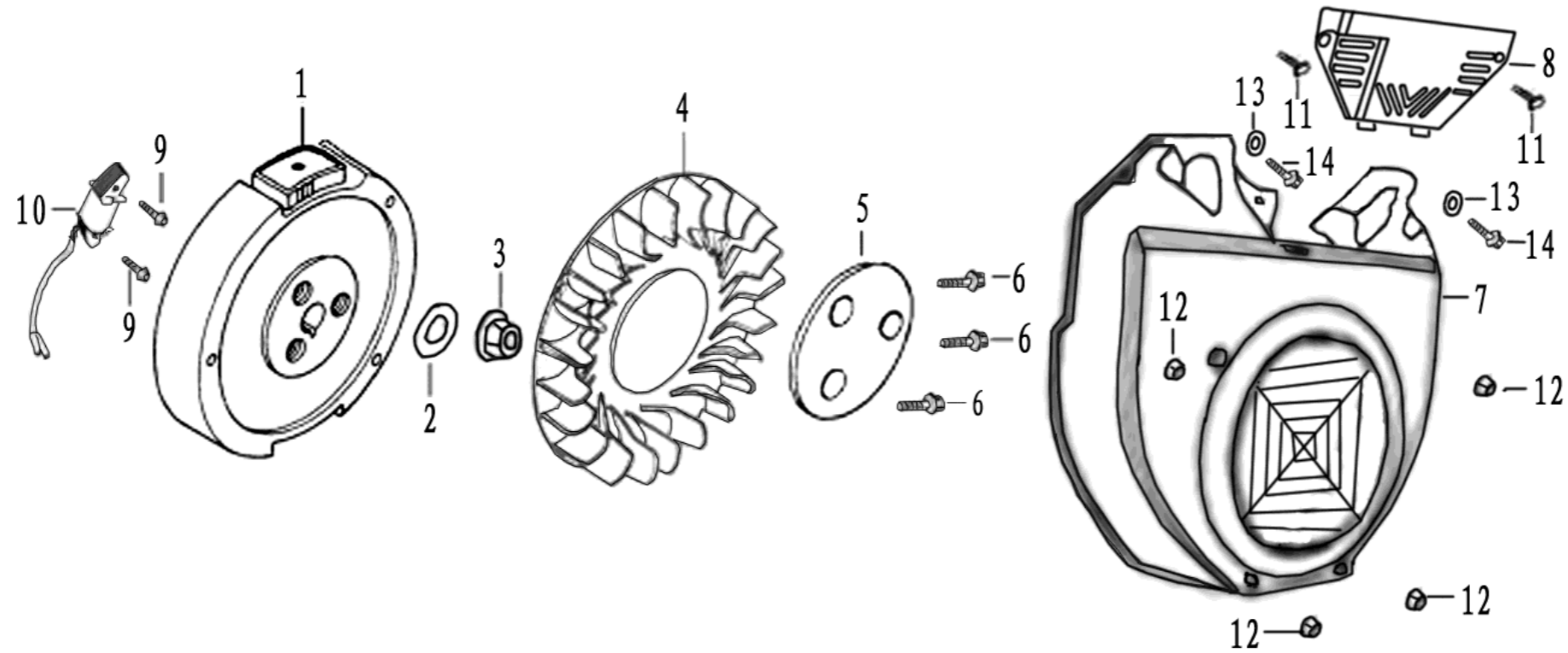
序号 Ref.No.	零部件代号 Part No	零部件名称	Description	数量 Quantity	备注 Remark
1	18100/2V77F	消声器内胆组合	The combination of muffler	1	
2	18130/2V77F	消声器罩	Muffler cover	1	
3	GB/T95	平垫 5	flat washer 5	3	
4	GB/T93	弹垫 5	elastic washer 5	3	
5	GB/T818	螺钉 M5x12	Screw M5×12	3	
6	GB/T6170	螺母 M8	Nut M8	4	
7	GB/T16674	螺栓 M8×16	Screw M8×16	2	
8	12255/2V77F	排气口垫片	Exhaust pipe	2	
9	18000/2V77F	消声器总成	Muffler assy	1	

E-10 调速控制系统 REGULATING CONTROL SYSTEM



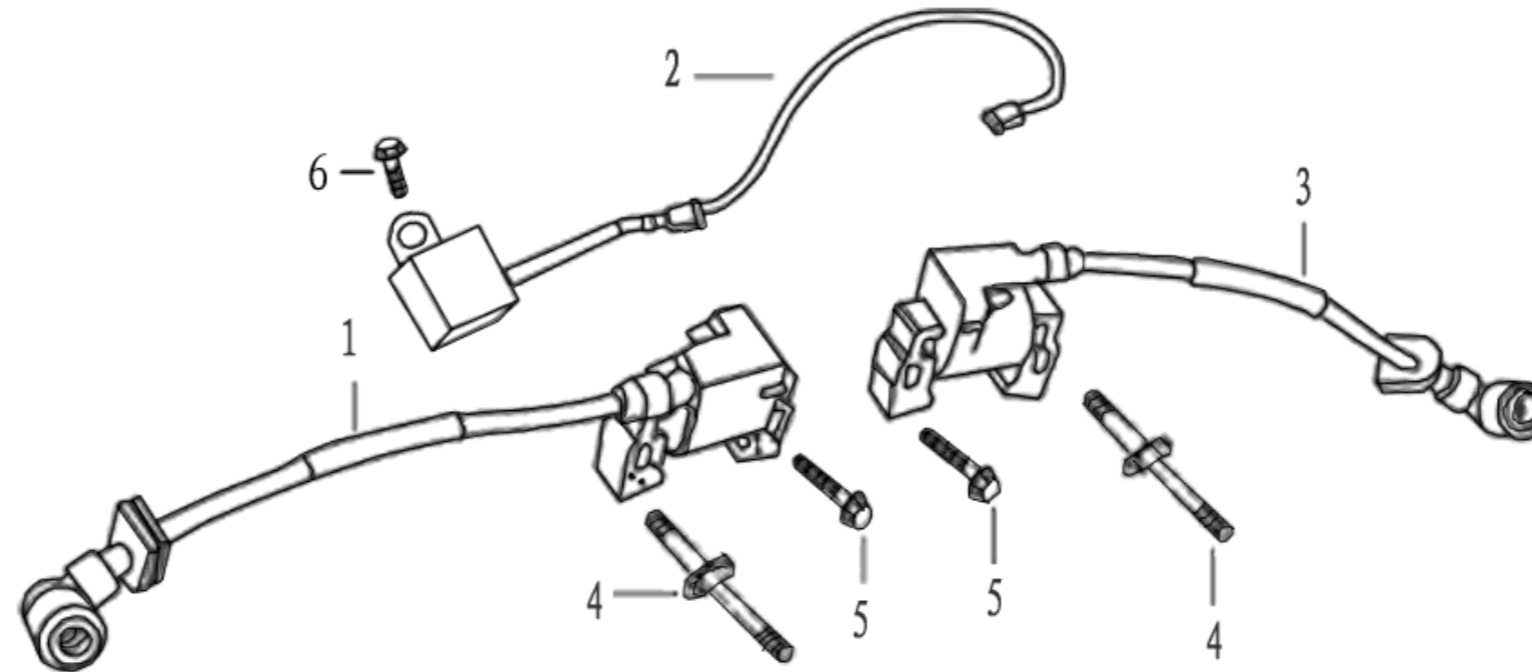
序号 Ref.No.	零部件代号 Part No	零部件名称	Description	数量 Quantity	备注 Remark
1	26420	调速支撑板组件	Regulating board	1	
2	26341	调速拉杆	Pulling rod	1	
3	26363	复位弹簧	Back spring	1	
4	26336	阻风门拉杆 I	Choke linkI	1	
5	26338	阻风门拉杆 II	Choke linkII	1	
6	26362	调速臂紧固螺栓	Lock bolt	1	
7	26331	调速臂	Regulating arm	1	
8	GB/T6177.1	螺母 M6	Nut M6	1	
9	GB/T16674.1	螺栓 M8×16	Bolt M8×16	2	
10	26415	调速弹簧	Regulating spring	1	
11	26364	微调速弹簧	Fine regulating spring	1	
12	26430	手柄组合	Hand grip assy	1	
13	26321/168F	调速摆杆锁夹	Clamp, regulating sway bar	1	
14	16148	阻风门开关	Switch, choke	1	
15	26335	阻风门拉杆锁夹 II	Clamp, Choke linkII	1	
16	26334	阻风门拉杆锁夹 I	Clamp, Choke linkI	1	
17	26342	调速拉杆锁夹	Clamp, pulling rod	1	
18	26412	手柄	Hand grip	1	
19	26413	支架	Fixed mount	1	

E-11 飞轮部件 FLYWHEEL



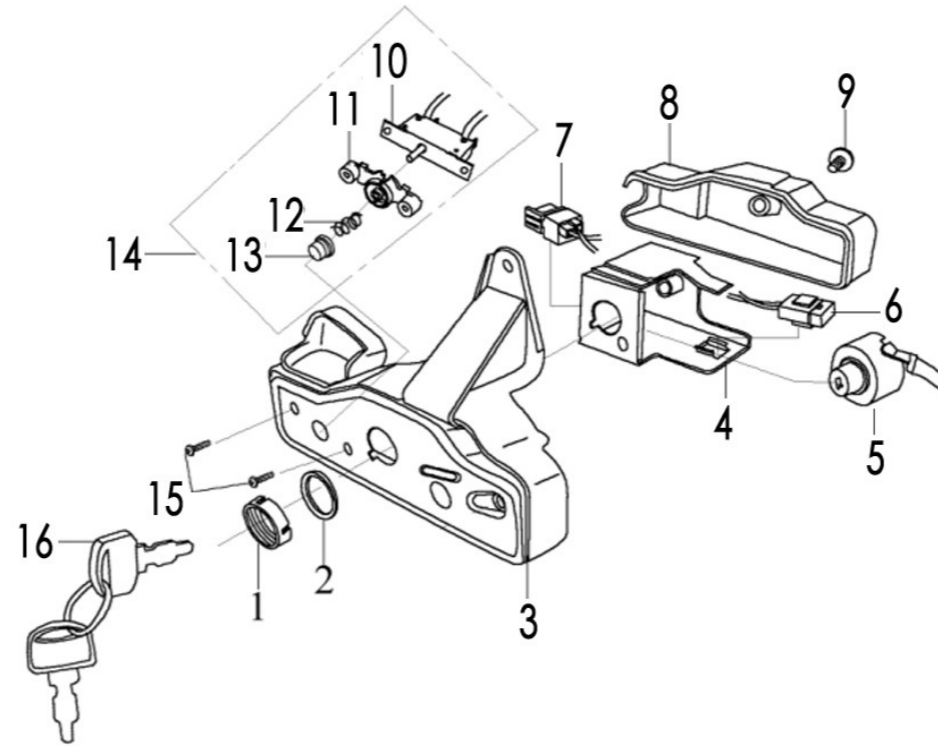
序号 Ref.No.	零部件代号 Part No	零部件名称	Description	数量 Quantity	备注 Remark
1	27500	飞轮组件	Flywheel	1	
2	27519	飞轮垫片	Washer, flywheel	1	
3	27515	飞轮螺母 M20×2	Nut M20×2	1	
4	19722	飞轮风扇	Flywheel fan	1	
5	19724	飞轮风扇压板	clamp assembly	1	
6	GB/T16674.1	螺栓 M8×16	Bolt M8×16	3	
7	19710	风扇罩组件	Fan hood assy	1	
8	19714	挡风板	Wind plate	1	
9	GB/T16674.1	螺栓 M6×30	Bolt M6×30	2	
10	31250	充电定子组件	Charging the stator assembly	1	
11	GB/T5282	自攻螺钉 st4.2×19	Screw st4.2×19	2	
12	GB/T6177.1	螺母 M6	Nut M6	4	
13	16733	汽油泵垫片	Washer, fuel pump	2	
14	GB/T16674.1	螺栓 M6×16	Bolt M6×16	2	

E-12 点火线圈组件 IGNITION COIL



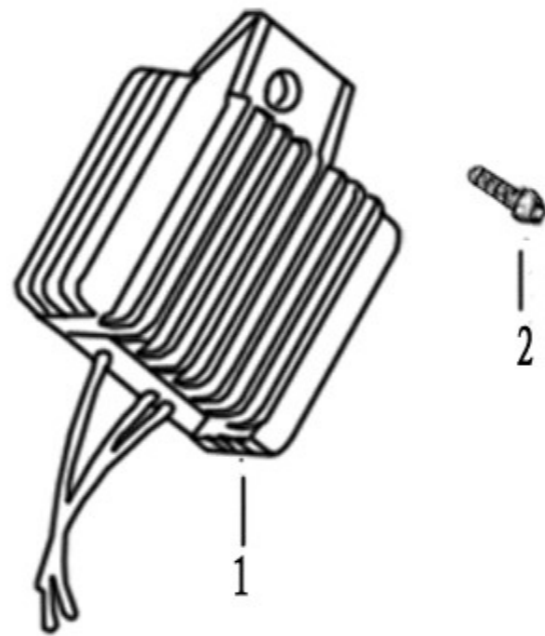
序号 Ref.No.	零部件代号 Part No	零部件名称	Description	数量 Quantity	备注 Remark
1	34500	点火线圈组件 I	Ignition coil assyI	1	
2	34400	熄火单向器	Flameout isolator	1	
3	34800	点火线圈组件 II	Ignition coil assyII	1	
4	34911	点火线圈双头螺栓	Stud	2	
5	GB/T16674.1	螺栓 M6×25	Bolt M6×25	2	
6	GB/T16674.1	螺栓 M6×12	Bolt M6×12	1	

E-13 起动控制盒总成 (选用件)



序号 Ref.No.	零部件代号 Part No	零部件名称	Description	数量 Quantity	备注 Remark
1	35412	锁紧圈	Clamp ring	1	
2	35413	钥匙开关垫圈	Gasket	1	
3	27386	控制盒前盖	Control front cover	1	
4	27387	控制盒内支撑架	Fixed mount	1	
5	35411	启动钥匙开关	Key switch	1	
6	35240	保险	Safety	1	
7	31112	二极管	Diode	1	
8	35341	控制盒后盖	Control rear cover	1	
9	35345	后盖连接螺栓	Attachment bolt	1	
10	28411	线路保护器	current protector	1	
11	28412	线路保护器支架	Fixed mount	1	
12	28413	弹簧	Spring	1	
13	28414	线路保护器帽	Circuit protector cap	1	
14	28410	线路保护器组合	current protector assy	1	
15	GB/T 818	十字半圆头螺钉 M3×12	Bolt M3×12	2	
16	35411	钥匙	Key	1	

E-14 整流器 (未购买起动控制盒时选用)



序号 Ref.No.	零部件代号 Part No	零部件名称	Description	数量 Quantity	备注 Remark
1	35412	整流器	rectifier	1	
2	GB/T 16674.1	螺栓 M6×12	Bolt M6×12	1	

E-15 贴花 EMBLEM



序号 Ref.No.	零部件代号 Part No	零部件名称	Description	数量 Quantity	备注 Remark
1	68129	型号贴花	Model label	1	
2	68223/168F	空滤器保养贴花	Emblem, maintenance of air cleaner	1	
3	68226	龟兔贴花	Emblem, tortoise and rabbit	1	
4	68222	加注机油贴花	Emblem, adding oil	1	
5	68228/168F	注意一氧化碳贴花	Emblem, Notice: CO	1	
6	68227/168F	阻风门开关贴花	Emblem, choke lever	1	
7	68225/168F	正负极贴花	Emblem, “+” “—” pole	2	